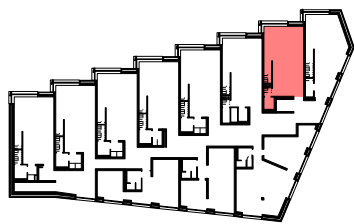
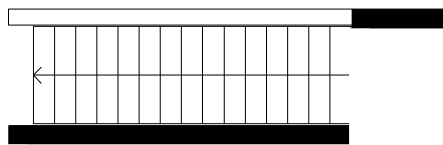
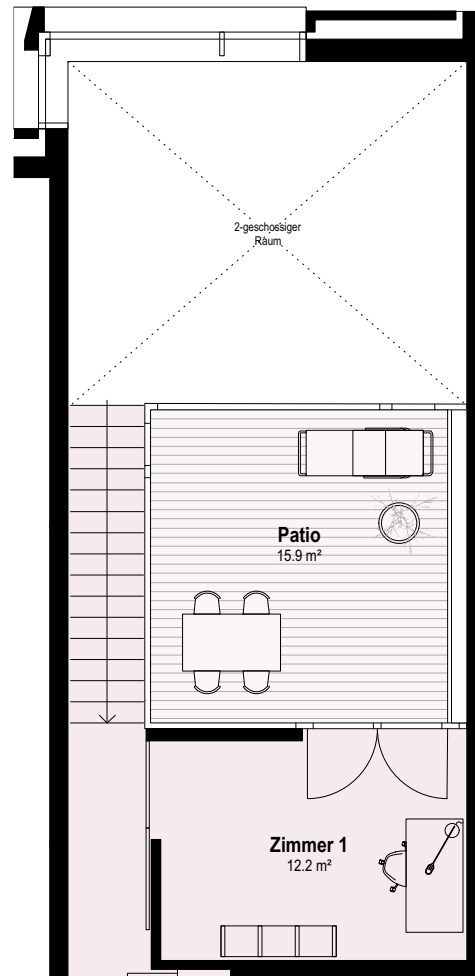
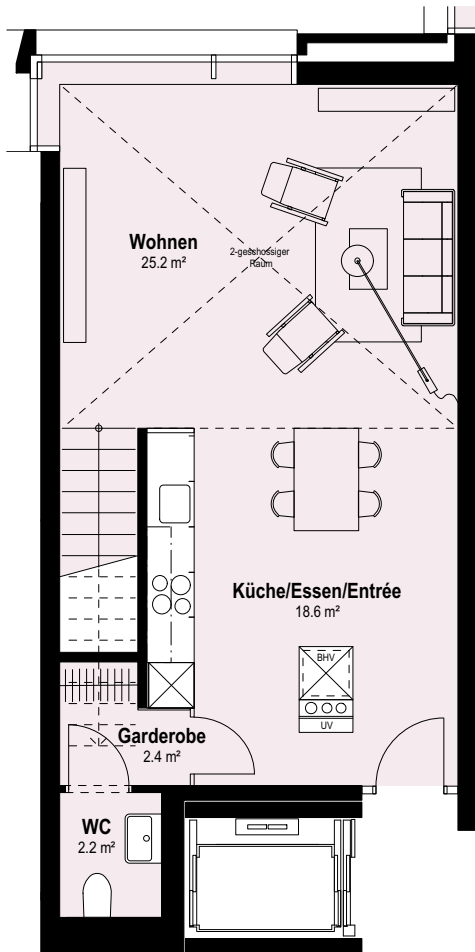
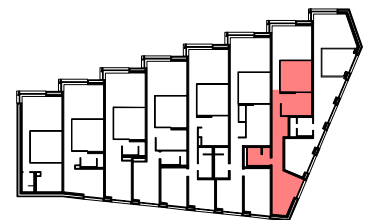
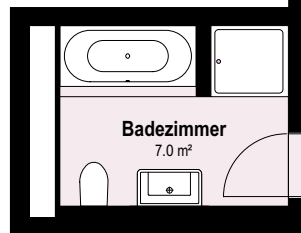


# WOHNEN AM SCHLOSSBERG | WOHNUNG NR. 7



3. OBERGESCHOSS



4. OBERGESCHOSS



Wohn- und Geschäftshaus Schlossberg  
 Bahnhofstrasse 7, 5400 Baden  
 Objekt: 3.5-Zimmer-Wohnung im 3. und 4. Obergeschoss  
 Wohnfläche Netto: 105.4 m<sup>2</sup>

Korridor/Treppe  
20.1 m<sup>2</sup>

KWL

WT  
WM

Zimmer 1  
12.2 m<sup>2</sup>

Patio  
15.9 m<sup>2</sup>

Zimmer 2  
17.6 m<sup>2</sup>

Wohnen  
25.2 m<sup>2</sup>

2-geschossiger  
Raum

Küche/EsSEN/Entrée  
18.6 m<sup>2</sup>

Garderobe  
2.4 m<sup>2</sup>

WC  
2.2 m<sup>2</sup>

2-geschossiger  
Raum