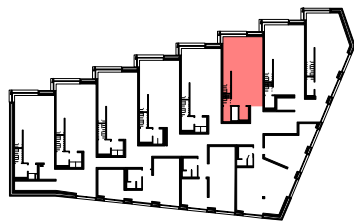
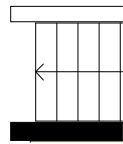
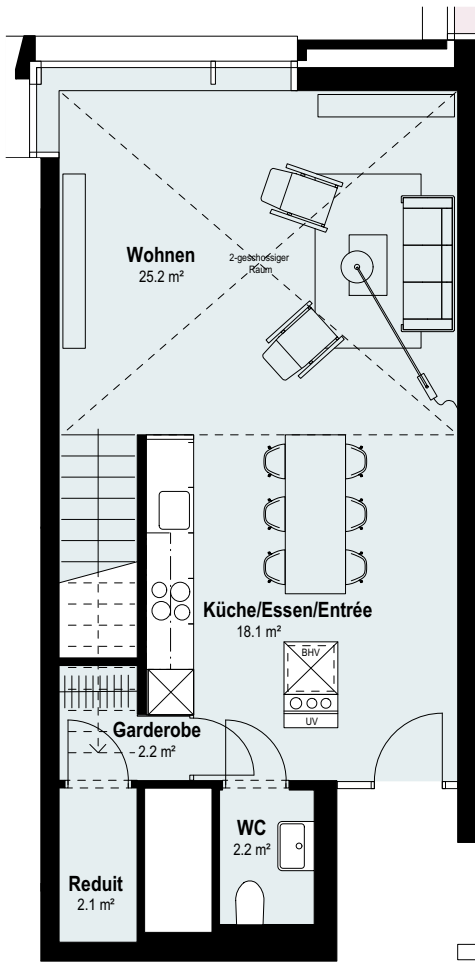
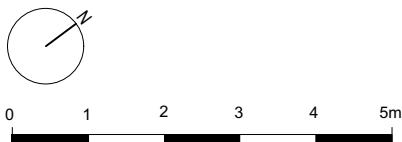


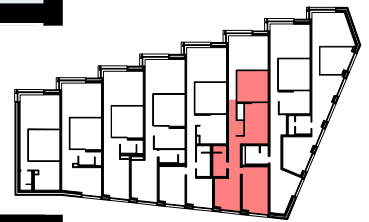
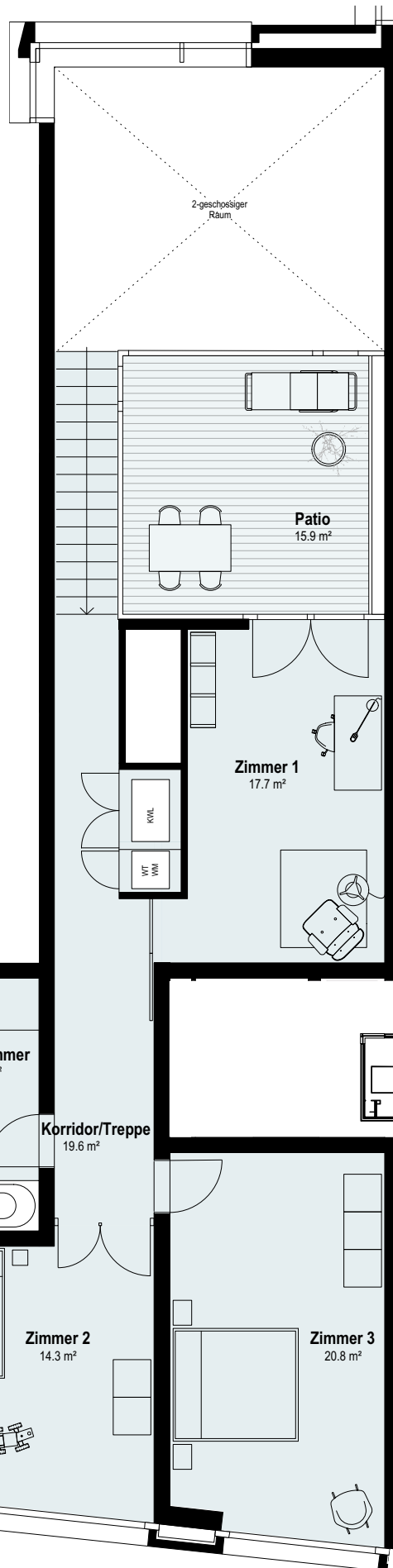
WOHNEN AM SCHLOSSBERG | WOHNUNG NR. 6



3. OBERGESCHOSS



Wohn- und Geschäftshaus Schlossberg
 Bahnhofstrasse 7, 5400 Baden
 Objekt: 4.5-Zimmer-Wohnung im 3. und 4. Obergeschoss
 Wohnfläche Netto: 129.4m²



4. OBERGESCHOSS