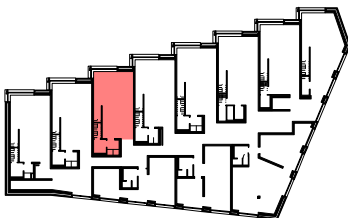
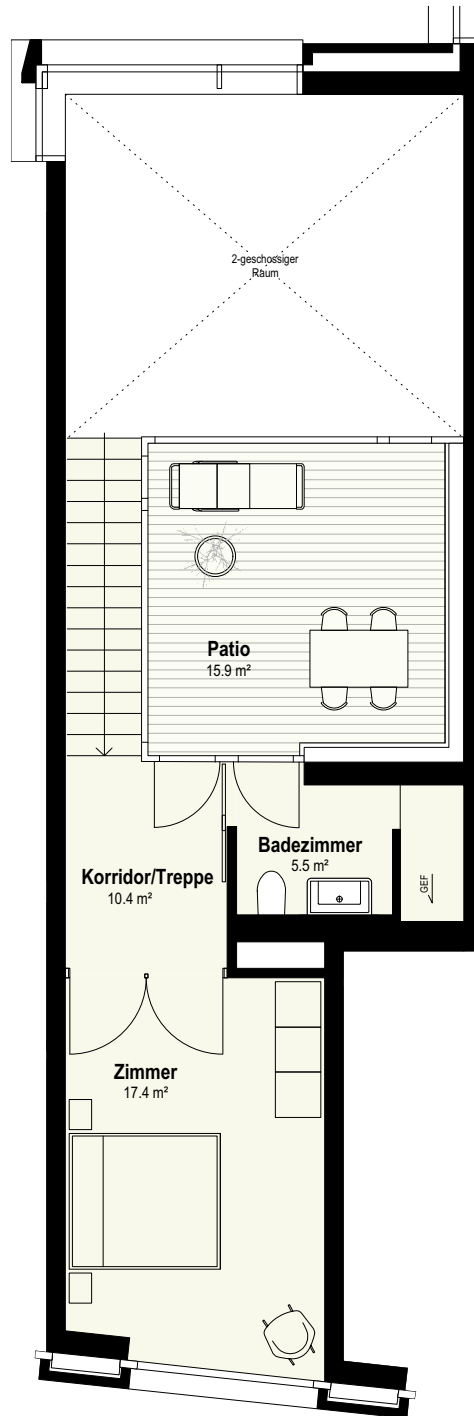
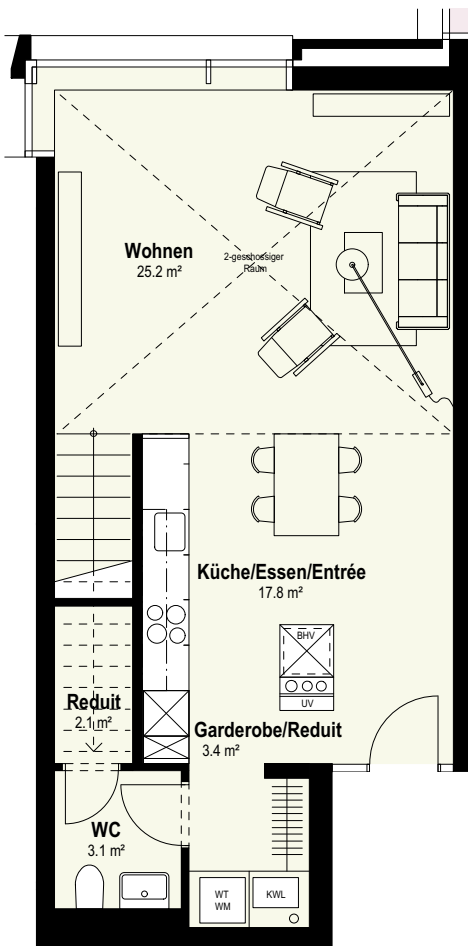
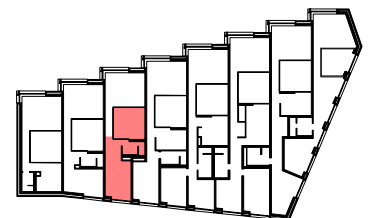


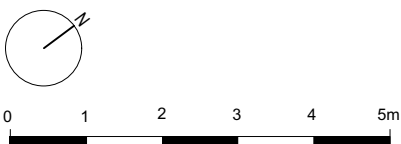
WOHNEN AM SCHLOSSBERG | WOHNUNG NR. 3



3. OBERGESCHOSS



4. OBERGESCHOSS



Wohn- und Geschäftshaus Schlossberg
 Bahnhofstrasse 7, 5400 Baden
 Objekt: 2.5-Zimmer-Wohnung im 3. und 4. Obergeschoss
 Wohnfläche Netto: 84.9 m²